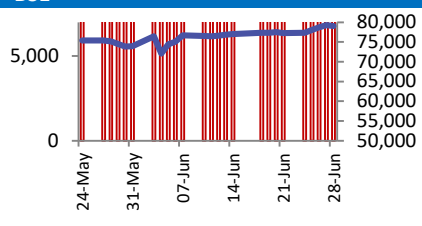
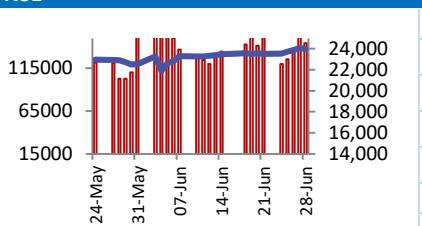


BSE		NSE																													
	<table border="1"> <tr><td>Open</td><td>79458</td></tr> <tr><td>High</td><td>79672</td></tr> <tr><td>Low</td><td>78906</td></tr> <tr><td>Close</td><td>79033</td></tr> <tr><td>Change</td><td>-210</td></tr> <tr><td>Volume (Lacs)</td><td>9744</td></tr> <tr><td>Turnover (Rs.inCr)</td><td>10541</td></tr> </table>	Open	79458	High	79672	Low	78906	Close	79033	Change	-210	Volume (Lacs)	9744	Turnover (Rs.inCr)	10541		<table border="1"> <tr><td>Open</td><td>24086</td></tr> <tr><td>High</td><td>24174</td></tr> <tr><td>Low</td><td>23986</td></tr> <tr><td>Close</td><td>24011</td></tr> <tr><td>Change</td><td>-34</td></tr> <tr><td>Volume(Lacs)</td><td>57115</td></tr> <tr><td>Turnover(Rs.in Cr)</td><td>144358</td></tr> </table>	Open	24086	High	24174	Low	23986	Close	24011	Change	-34	Volume(Lacs)	57115	Turnover(Rs.in Cr)	144358
Open	79458																														
High	79672																														
Low	78906																														
Close	79033																														
Change	-210																														
Volume (Lacs)	9744																														
Turnover (Rs.inCr)	10541																														
Open	24086																														
High	24174																														
Low	23986																														
Close	24011																														
Change	-34																														
Volume(Lacs)	57115																														
Turnover(Rs.in Cr)	144358																														

World Markets	Current	Previous	Pt. Chg	Var(%)
Dow	39119	39164	(45)	-0.1%
Dow Futures	39526	39469	57	0.1%
Nasdaq	17733	17859	(126)	-0.7%
FTSE	8164	8180	(16)	-0.2%
Nikkei	39687	39583	104	0.3%
Hang Seng	17719	17719	Closed	Closed
Gift Nifty	24120	24120	0	0.0%
Straits Singapore	3335	3333	2	0.1%
South Korea	2801	2798	3	0.1%
Taiwan	23164	23032	131	0.6%
Shanghai	2967	2967	(0)	0.0%

Commodity Prices	Current	Previous	Pt. Chg	Var(%)
Copper (\$/MT)	9599	9516	83.5	0.9%
Alumin (\$/MT)	2525	2493	32.0	1.3%
Zinc (\$/MT)	2938	2930	8.0	0.3%
Brent Crude (\$/bbl)	85.4	85.0	0.4	0.4%
Gold (\$/Ounce)	2326	2327	(0.3)	0.0%
Silver (\$/Ounce)	29.1	29.1	(0.0)	-0.1%
Light Crude (\$/bbl)	81.9	81.5	0.4	0.5%
N G (\$/mmbtu)	2.6	2.6	(0.0)	-1.0%
Sugar (\$/MT)	598.4	585.1	13.3	2.3%
Rubber (Rs./kg)	206.0	206.0	0.0	0.0%
Baltic Dry Index	2050	2031	19.0	0.9%

Currency Exchange Rate	Current	Previous	Var(%)
Rs./\$ rate	83.39	83.46	-0.08%
Rs./ Euro	89.30	89.28	0.02%
Rs./Chinese Yuan	11.47	11.48	-0.01%
Yen /\$ rate	160.88	160.88	0.00%
\$ US/Euro	1.08	1.07	0.35%

Dollar Index	Current	Previous	Var(%)
Dollar Index	105.26	105.28	-0.02%

Support/ Resistance Levels for Today		
	Nifty	Bank Nifty Fut
Support 1	23940	52300
Support 2	23870	52000
Resistance	24100	52900

Securities in Ban For Trade	
INDIACEM	INDUSTOWER

### Market Review

**US:** US stocks faced uncertainty as the quarter concluded, following a robust surge driven by speculation that the Federal Reserve may initiate rate cuts within the year.

**Asia:** Most Asian markets declined Monday after data showed China's manufacturing activity struggled to come out of negative territory, raising concern about the world's second largest economy.

**India:** India's benchmark stock indices closed higher on a weekly basis for the fourth consecutive week, marking their best month so far in 2024. However, on Friday, they snapped their four-day record run to end lower. **Market is expected to open on a flattish note and likely to witness range bound move during the day.**

### Global economy:

The U.S. Supreme Court's conservative majority trained its legal firepower this term on curbing federal regulatory authority, cementing its critical role in a longstanding effort by business interests and others to defang the administrative state. The court's sweeping rulings have limited the federal government's power to regulate everything from stock trading to pollution, even as the justices opted not to further curtail abortion rights or expand gun rights under the U.S. Constitution's Second Amendment ahead of the Nov. 5 presidential election. The court's nine-month term comes to an end on Monday. Marine Le Pen's far-right National Rally party scored historic gains to win the first round of France's parliamentary election on Sunday, exit polls showed, but the final result will depend on days of horsetrading before next week's run-off. The RN was seen winning around 34% of the vote, exit polls from Ipsos, Ifop, OpinionWay and Elabe showed, in a huge setback for President Emmanuel Macron who had called the snap election after his ticket was trounced by the RN in European Parliament elections earlier this month.

**Commodities:** Gold prices held steady in early Asian hours on Monday, buoyed by data that showed inflation in the U.S. subsided, boosting hopes that the Federal Reserve will start cutting interest rates this year.

Oil prices edged up in early trade on Monday, supported by forecasts of a supply deficit stemming from peak summer fuel consumption and OPEC+ cuts in the third quarter, although global economic headwinds and rising non-OPEC+ output capped gains.

**Currency:** The euro rose against the dollar Monday on signs France's far-right would not win enough seats for an overall majority in legislative elections.

FII Derivative Transactions (Rs. Cr)

Contracts	Purchase		Sell		Net	Open Interest (OI)		OI (Previous day)		Change	
	Contract	Value	Contract	Value		Contract	Value	Contract	Value	Contract	Value
Index Future	80083	5193	52307	3482	1711	533605	34008	503017	32110	30588	1898
Index Option	18110077	1277985	18047842	1270081	7904	4859431	334349	4013420	280040	846011	54309
Stock Future	435875	33621	365675	28492	5129	3920081	298571	3916483	297640	3598	931
Stock Option	504586	39863	507674	40199	(336)	210902	16224	77746	5844	133156	10380
<b>Total</b>	<b>19130621</b>	<b>1356662</b>	<b>18973498</b>	<b>1342254</b>	<b>14408</b>	<b>9524019</b>	<b>683152</b>	<b>8510666</b>	<b>615634</b>	<b>1013353</b>	<b>67518</b>

FII All Activity-BBG (Rs Cr)	Buy	Sell	Net
21-Jun-24	46238	44441	1798
24-Jun-24	14524	13663	860
25-Jun-24	17843	15378	2465
26-Jun-24	20022	18509	1513
27-Jun-24	33718	25960	7758
<b>Month to date- June</b>	<b>383089</b>	<b>358702</b>	<b>24387</b>
FII (Prov.) (Rs Cr)	Buy	Sell	Net
24-Jun-24	13720	14374	(654)
25-Jun-24	17332	16156	1176
26-Jun-24	19921	23456	(3535)
27-Jun-24	30849	23191	7659
28-Jun-24	20606	20629	(23)
<b>Month to date-June</b>	<b>391741</b>	<b>389703</b>	<b>2037</b>
DII (Prov.) (Rs. Cr)	Buy	Sell	Net
24-Jun-24	11251	12072	(820)
25-Jun-24	13519	13669	(149)
26-Jun-24	18342	13239	5104
27-Jun-24	26887	30493	(3606)
28-Jun-24	20973	14315	6658
<b>Month to date-June</b>	<b>337469</b>	<b>308835</b>	<b>28633</b>
FII Debt - BBG (Rs. Cr)	Buy	Sell	Net
21-Jun-24	1757	611	1146
24-Jun-24	791	335	456
25-Jun-24	4824	3757	1066
26-Jun-24	2105	1340	765
27-Jun-24	2579	1633	946
<b>Month to date- June</b>	<b>41730</b>	<b>26113</b>	<b>15616</b>

Market Breadth	BSE		NSE	
	No.	%	No.	%
Advance	2133	53%	1436	53%
Decline	1768	44%	1206	45%
Unchanged	111	3%	53	2%

Market Turnover	28-Jun	27-Jun	Var (%)
BSE Cash	10541	13769	-23%
NSE Cash	144358	175813	-18%
NSE Futures	175264	416508	-58%
NSE Options	13537555	50192385	-73%
<b>Total (Rs.Cr)</b>	<b>13867718</b>	<b>50798475</b>	<b>-73%</b>

Volatility Index	28-Jun	27-Jun
Volatility Index	13.80	14.15

Index PE - TTM	28-Jun	Yr. High	Yr. Low
Sensex	24.0	26.0	21.8
Nifty	22.9	28.8	20.3

Corporate News

**BEL bags order worth Rs 3,172 crore from Armoured Vehicles Nigamce**

Bharat Electronics has signed a contract valued at Rs 3,172 crore with Armoured Vehicles Nigam on 28 June 2024. The project entails the supply and installation of an advanced, indigenously designed and developed sighting and fire control system (FCS) for the upgrade of BMP 2/2K Tanks of the Indian Army, along with a comprehensive engineering support package. Additionally, BEL has secured other orders valued at Rs 481 crore which comprises of doppler weather radar, classroom jammers, spares and services etc. (BS)

**Cochin Shipyard arm inks contract with Norwegian company**

Cochin Shipyard wholly owned subsidiary, Udipi Cochin Shipyard has entered into contract with Wilson ASA, Norway, for design and construction of 4 nos. of 6300 TDW dry Cargo Vessels. Wilson ASA, a company headquartered in Bergen, Norway, is the leading short sea fleet operator in Europe and transports about 15 million tonnes dry cargo across Europe. The company operates a fleet of around 130 vessels ranging from 1500 to 8500 DWT. (TH)

Economy

**Excess rainfall, untimely sowing likely to hit some kharif crops**

The weather office's forecast that the second half of the monsoon season could see above-normal rains has raised fears that excess moisture could hit the crops of moong, urad, soyabean and cotton, sowing for which has started late because of deficit rainfall. It has been seen that delayed sowing followed by excess rainfall at the time of harvest or during the flowering and the fruiting stages has often spoiled crops of moong, urad, soyabean and cotton, reducing their production substantially. (ET)

International

**Boeing to buy Spirit for \$4.7 bln in all stock deal**

Boeing Co has agreed to reacquire Spirit Aerosystems Holdings Inc for over \$4 billion, ending months of speculation over the deal as the planemaker struggled with a new safety crisis. Boeing will pay \$37.25 for each share in Spirit in an all stock deal, valuing the aircraft parts maker at \$4.7 billion. Boeing will bring Spirit back under its wing after the planemaker spun off the company in 2005. The move also comes as Boeing grapples with a renewed safety scandal after the mid-air opening of a door on a 737 MAX 9 jet exposed a slew of safety and quality issues. (Reuters)

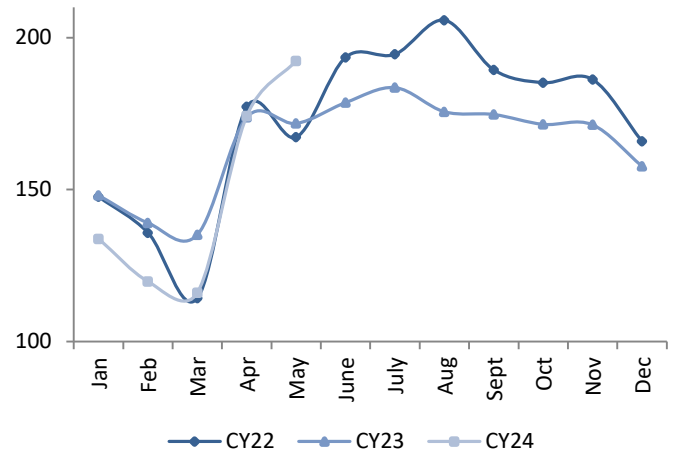
Top 5 Nifty Gainers	28-Jun	27-Jun	Var(%)
DRREDDY	6402	6236	2.7%
ONGC	274	268	2.5%
RELIANCE	3131	3061	2.3%
SBILIFE	1492	1463	1.9%
TATAMOTORS	990	972	1.8%
Top 5 Nifty Losers	28-Jun	27-Jun	Var(%)
INDUSINDBK	1465	1503	-2.5%
BHARTIARTL	1444	1476	-2.2%
AXISBANK	1265	1289	-1.8%
ICICIBANK	1200	1220	-1.7%
KOTAKBANK	1803	1831	-1.5%

BSE Index Watch	Last	1 day	1 wk	1 mth	1 yr
SENSEX	79033	-0.3%	2.4%	6.9%	22.1%
MIDCAP	46158	0.4%	0.4%	7.7%	60.4%
SMLCAP	52130	0.6%	0.4%	10.3%	59.9%
AUTO	57293	0.0%	1.0%	8.0%	64.1%
BANKEK	59641	-1.0%	1.6%	6.9%	18.1%
Capital Goods	72324	-0.4%	0.8%	3.2%	77.6%
FMCG	20550	0.3%	1.1%	5.2%	9.9%
Health Care	37110	0.9%	0.9%	6.4%	43.8%
IT	36951	0.1%	2.2%	11.3%	23.7%
METAL	33051	0.7%	-2.0%	1.0%	60.7%
Oil & Gas	29473	1.5%	2.1%	2.9%	61.9%
Power	7955	-0.1%	1.8%	3.3%	98.3%
Realty	8635	0.6%	-2.4%	8.2%	107.5%

NSE USD Futures	28-Jun	27-Jun	Var (%)
June Expiry (Rs./\$)	83.46	83.46	0.0%
July Expiry (Rs./\$)	83.56	83.56	0.0%
Total Turnover (Rs. Crore)	1285	1214	6%

Sectors	TTM PE
Auto	34.31
Auto Ancillary	52.91
Banking	15.87
Engineering	44.79
Cement	77.12
Diamonds & Jewellery	62.88
Housing Finance	25.09
Infrastructure & Const	32.01
Metals-Aluminium	41
Metal - Steel	19.39
Oil Expl.	16.6
Pharma	10.2
Power – Gen. Supp.	40.78
Information Tech.	25.24
Sugar	19.89
Telecom Serv. Prov.	87.09
Tyres	28.77

All India Tea Prices (Rs/Kg) (Source: teaboard.gov.in)



10 year G-Sec Yield	Current	Previous	Change
US	4.39%	4.40%	(1) bps
Japan	1.08%	1.06%	2 bps
India	7.01%	7.00%	1 bps
UK	4.17%	4.13%	4 bps
Libor 3 Mths	5.59%	5.59%	(1) bps

Indian Eco Data	Current	Previous	Var(%)
Forex Reserve (US\$ in bn)	652	647	0.7%
Inflation - WPI	2.61%	1.26%	135 bps
Inflation - CPI	4.75%	4.83%	(8) bps

India GDP	Q4FY24	Q3FY24	Var(%)
Growth	7.76%	8.57%	(81) bps

Monetary Policy	Current	Previous	Change
Repo Rate	6.50%	6.50%	0 bps
Reverse Repo Rate	3.35%	3.35%	0 bps
CRR	4.50%	4.50%	0 bps
O/S Banking System Liquidity (Rs bn)	-327	-1365	1038.8

IIP Growth %	Jan-24	Jan-23	Apr-Feb
IIP	5.0	4.6	6.3
Mining	5.9	9.0	8.5
Manufacturing	3.2	4.5	5.7
Electricity	5.6	12.7	7.0

ADR Price Movement

Company	Price (US\$)	Volume	Previous Day Price	Volume	Variance (%)	No. of Share Per ADR	ADR Price (Rs.)	BSE Price	Variance (%)
Infosys Tech	18.62	9520327	18.63	8949400	-0.05%	1	1552.75	1566.75	-0.9%
Wipro	6.10	5547325	6.02	1744539	1.33%	1	508.69	514.85	-1.2%
Dr.Reddy's	76.19	248553	75.40	342863	1.05%	1	6353.58	6402.35	-0.8%
ICICI Bank	28.81	5988752	29.01	3274349	-0.69%	2	1201.25	1199.60	0.1%
HDFC Bank	64.33	3539139	64.87	3588075	-0.83%	3	1788.19	1683.80	6.2%

GDR's (US\$)

	Prices	Prev. Close	Change	Var %
L&T	42.60	42.40	0.2	0.5%
RIL	74.60	73.50	1.1	1.5%
SBI	101.00	100.60	0.4	0.4%

US Economy Data

	Current	Previous
Inflation (YoY)	3.30%	3.40%
Unemployment (%)	4.00%	3.90%

Interest Rate (%)

	Current	Previous
Fed Rate	5.50%	5.50%

US GDP

	Q1CY24	Q4CY23	Q4CY22
Growth (QoQ Annualized)	1.40%	3.40%	2.60%

China Economy Data

	Current	Previous
GDP	5.30%	5.20%
Inflation – CPI (%)	0.30%	0.30%

Economic Calendar

	Date
Indian GDP Data	30 Aug
Indian Inflation Data CPI	12 Jul
Indian Inflation Data WPI	15-Jul
Indian Monetary Policy	08 Aug
India's Industrial Production (IIP)	12 Jul
US Inflation Data	11 Jul
US GDP	25 Jul
US Unemployment Data	05 Jul
US Fed Rate	31 Jul
China GDP	15 Jul
China Inflation Data	10 Jul

Event Update

Name	Date	Purpose
Geojit Financial Services Ltd.	01-07-2024	Rs.1.50 per share(150%)Final Dividend
GHCL Ltd.	01-07-2024	Rs.12.00 per share(120%)Final Dividend
GHCL Textiles Ltd.	01-07-2024	Rs.0.50 per share(25%)Final Dividend
Lloyds Enterprises Ltd.	01-07-2024	Rs.0.10 per share(10%)Final Dividend
Bajaj Consumer Care Ltd.	02-07-2024	Buy Back of Shares
Epigral Ltd.	02-07-2024	Rs.5.00 per share(50%)Final Dividend
Oil India Ltd.	02-07-2024	Bonus issue
Dalmia Bharat Sugar And Industries Ltd.	03-07-2024	Rs.1.25 per share(62.5%)Final Dividend
GPT Infraprojects Ltd.	03-07-2024	Bonus issue
Worth Investment & Trading Co Ltd.	03-07-2024	Stock Split from Rs.10/- to Re.1/-
eClerx Services Ltd.	04-07-2024	Buy Back of Shares
SKF India Ltd.	04-07-2024	Rs.130.00 per share(1300%)Final Dividend
Tata Power Company Ltd.	04-07-2024	Rs.2.00 per share(200%)Final Dividend
3M India Ltd.	05-07-2024	Rs.525.00 per share(5250%)Special Dividend
Allsec Technologies Ltd.	05-07-2024	Rs.15.00 per share(150%)Final Dividend
Apollo Tyres Ltd.	05-07-2024	Rs.6.00 per share(600%)Final Dividend
Artemis Medicare Services Ltd.	05-07-2024	Rs.0.45 per share(45%)Final Dividend
Astrazeneca Pharma India Ltd.	05-07-2024	Rs.24.00 per share(1200%)Final Dividend
Bharat Forge Ltd.	05-07-2024	Rs.6.50 per share(325%)Final Dividend
Biocon Ltd.	05-07-2024	Rs.0.50 per share(10%)Final Dividend
Inventure Growth & Securities Ltd.	05-07-2024	Right Issue of Equity Shares
Milkfood Ltd.	05-07-2024	Rs.2.50 per share(25%)Interim Dividend
Navin Fluorine International Ltd.	05-07-2024	Rs.7.00 per share(350%)Final Dividend
Nucleus Software Exports Ltd.	05-07-2024	Rs.12.50 per share(125%)Final Dividend
Piramal Enterprises Ltd.	05-07-2024	Rs.10.00 per share(500%)Final Dividend



**Bulk Deal As On 28/06/24**

BSE

Security Code	Security Name	Client Name	Deal	Quantity	Price
542579	AGOL	NITESH HISSARIA HUF	S	2000000	7.4
539300	AKSPINTEX	KISHOR PUNAMCHAND OSTWAL	S	27000	191.89
539300	AKSPINTEX	LIESHA CORPORATION PRIVATE LIMITED .	S	23078	215.88
539300	AKSPINTEX	LIESHA CORPORATION PRIVATE LIMITED .	B	31665	216.2
539300	AKSPINTEX	MANISH GOEL	B	63524	185
539115	ALAN SCOTT	SURESHKUMAR PUKHRAJ JAIN	B	10000	78.04
540788	ASPIRA	GLORIOUS HOLDINGS PVT LTD	S	75000	30
544183	ASSOCIATED	KAIZEN ORGANICS PRIVATE LIMITED	B	8000	198.75
543209	BILLWIN	LIESHA CORPORATION PRIVATE LIMITED .	S	24000	56.66
543209	BILLWIN	LIESHA CORPORATION PRIVATE LIMITED .	B	18000	57.27
543209	BILLWIN	PUNEET MITTAL	S	27000	55.44
543209	BILLWIN	PUNEET MITTAL	B	12000	54.56
543212	BOROLTD	CARNELIAN ASSET MANAGEMENT & ADVISORS PRIVATE LIMITED	B	1385000	318.05
543212	BOROLTD	CARNELIAN STRUCTURAL SHIFT FUND	B	660000	318.05
543212	BOROLTD	KIRAN KHERUKA	S	1632800	318.08
543212	BOROLTD	PRADEEP KUMAR KHERUKA	S	764150	318.05
543212	BOROLTD	REKHA KHERUKA	S	748650	318.06
530249	BRIDGESE	DIPTIBEN KALPSHKUMAR PANCHAL	S	23902	28.63
530249	BRIDGESE	NARESHKUMAR RAMANLAL PANCHAL	S	23579	28.63
524440	CAMEXLTD	CHANDRAPRAKASH BHANWARLAL HUF	S	190000	64.18
524440	CAMEXLTD	JYOTI ANAND BAFNA	B	140000	64
544151	CHATHA	FRIGERIO CONSERVA ALLANA PRIVATE LIMITED	B	164000	104.49
543172	COSPOWER	A JAGADEESH	B	21500	250.59
543172	COSPOWER	DONTHIREDDYSANNIHITAREDDY	S	30000	250.41
543172	COSPOWER	JAGADEESHATUKURI	B	9000	264.89
544195	COTFAB	ANSARI NAMRA FIRDAUS AAMIR ANJUM	B	114000	75.41
544201	DFPL	NAV CAPITAL VCC - NAV CAPITAL EMERGING STAR FUND	B	154000	113.11
544201	DFPL	NAV CAPITAL VCC - NAV CAPITAL EMERGING STAR FUND	B	300000	113.11
544201	DFPL	NAV CAPITAL VCC - NAV CAPITAL EMERGING STAR FUND	B	300000	113.11
544201	DFPL	PRANAV PARESH SHAH	S	510000	113.11
542155	DGL	HEMANT KUMAR AGARWAL	S	70000	4.45
542155	DGL	JANAK GUL MIRCHANDANI	B	80000	4.45
540080	DHATRE	CHANDRA PRAKASH JAIN	B	675000	16.82
540080	DHATRE	RUPA AGARWAL	S	1258976	16.65
540080	DHATRE	SUMIT KUMAR AGARWAL HUF	S	546743	16.75
543516	DHYAANITR	ANAND MOHAN	B	25200	23.11
543516	DHYAANITR	CHINTAN NAYAN BHAI RAJYAGURU	S	196000	23
543516	DHYAANITR	GAYATHIRIRADHAKRISHNAN	B	50400	23.04
543516	DHYAANITR	KRISHNA TRADE FINANCE	S	25200	23.18
543516	DHYAANITR	KRISHNA TRADE FINANCE	B	53200	23.01
543516	DHYAANITR	SHREE SADGURU INVESTMENTS	B	33600	23.01
512441	ENBETRD	CHIRAG RAJENDRA SHAH	S	132615	11.63
532092	EPUJA	SHIVA KUMAR	S	1000000	5.15
532092	EPUJA	SPS MULTI-COMMODITY LLP	B	1200000	5.16
544199	GEMENVIRO	ASHISH GUPTA	B	115200	164.95
530263	GLOBALCA	NIKHIL RAJESH SINGH	S	2776493	1.03
530263	GLOBALCA	NIKHIL RAJESH SINGH	B	49008	1.1
531913	GOPAIST	SUMANCHEPURI	B	25106	8

523277	GVFILM	SHUBHAM ASHOKBHAI PATEL	S	5272689	0.81
523277	GVFILM	SHUBHAM ASHOKBHAI PATEL	B	1058493	0.86
530979	INDIAHOME	BHAVIN MAHESH PUJARA	B	150000	31
530979	INDIAHOME	SANTOSHKUMAR MOHANLAL RATHI HUF	S	150000	31
536709	INDRENEW	PRAGNABENGRISHBHAIGHETIYA	S	100000	15.66
514060	MARKOBENZ	NIKHIL SINGH	S	130000	19
541337	MILEFUR	AJAY PRATAP SINGH	B	48000	9.75
541337	MILEFUR	AKASH GOYAL	B	54000	9.46
541337	MILEFUR	BIJAL KISHORCHANDRA MADHANI	B	60000	9.81
541337	MILEFUR	CHANKARANPALLIL KUNCHANDI ALEXANDER	S	150000	8.97
541337	MILEFUR	JAYESHJIVRAJBHAIPRAJAPATI	B	102000	9.63
541337	MILEFUR	MILIND MADHANI SECURITIES PRIVATE LIMITED	B	90000	9.81
541337	MILEFUR	NEERAJAGGARWAL	B	54000	9.27
541337	MILEFUR	RAMPAL LALURAM LADDHA HUF	B	60000	9.69
541337	MILEFUR	SHYAM SUNDER LOYA	S	141000	9.81
541337	MILEFUR	SITA DEVI	S	54000	9.81
543207	NATURAL	RUPA KUMARI	S	175155	10.88
514330	ONEGLOBAL	MULTIPLIER SHARE & STOCK ADVISORS PRIVATE LIMITED	B	47923	143.34
531512	ORIENTTR	ANISA ALNASIR GILANI	S	500000	11.52
531512	ORIENTTR	DAMINI COMMOSALES LLP	B	138242	11.87
531512	ORIENTTR	MANOJ N SHAH (HUF)	B	100000	11.5
531512	ORIENTTR	PARAG COMMOSALES	B	81498	11.71
531512	ORIENTTR	PARESH N SHAH (HUF)	B	100000	11.5
531512	ORIENTTR	SHANMUKH N SHAH (HUF)	B	100000	11.5
538742	PANABYTE	AMIT D RAMBHIA	S	89760	26
538742	PANABYTE	NIKIT D RAMBHIA	S	24154	26.01
530565	POPEES	MULTIPLIER SHARE & STOCK ADVISORS PRIVATE LIMITED	S	31229	98.19
530565	POPEES	MULTIPLIER SHARE & STOCK ADVISORS PRIVATE LIMITED	B	3922	98.25
541601	RAJNISH	JOYDEEP COMMOSALES LLP	B	3955001	6
543256	RFL	PAWAN KUMAR MITTAL	S	87609	17.87
539226	RUDRA	VARUN KRISHNAVATAR KABRA	S	504676	55.73
539226	RUDRA	VARUN KRISHNAVATAR KABRA	B	512167	54.68
514010	RUDRAECO	DPG TEXTILE LIMITED	S	2925000	57.1
514010	RUDRAECO	MULTIPLIER SHARE & STOCK ADVISORS PRIVATE LIMITED	B	500000	57.09
543984	SAMHI	ABU DHABI INVESTMENT AUTHORITY - BEHAVE	B	1135000	187.1
543984	SAMHI	ABU DHABI INVESTMENT AUTHORITY - BEHAVE	B	1135000	187.1
543984	SAMHI	GTI CAPITAL ALPHA PVT LTD	S	10336865	187.1
543984	SAMHI	GTI CAPITAL ALPHA PVT LTD	S	534600	187.1
543984	SAMHI	GTI CAPITAL ALPHA PVT LTD	S	565404	187.1
543984	SAMHI	GTI CAPITAL ALPHA PVT LTD	S	801840	187.1
543984	SAMHI	GTI CAPITAL ALPHA PVT LTD	S	1000000	187.1
543984	SAMHI	GTI CAPITAL ALPHA PVT LTD	S	1069119	187.1
543984	SAMHI	GTI CAPITAL ALPHA PVT LTD	S	1135000	187.1
543984	SAMHI	GTI CAPITAL ALPHA PVT LTD	S	2138237	187.1
543984	SAMHI	GTI CAPITAL ALPHA PVT LTD	S	3092665	187.1
543984	SAMHI	ICICI PRUDENTIAL MUTUAL FUND	B	2138237	187.1
543984	SAMHI	ICICI PRUDENTIAL MUTUAL FUND	B	2138237	187.1
543984	SAMHI	JM FINANCIAL MUTUAL FUND	B	1069119	187.1
543984	SAMHI	MORGAN STANLEY ASIA SINGAPORE PTE	B	3092665	187.1
543984	SAMHI	MORGAN STANLEY ASIA SINGAPORE PTE	B	3092665	187.1
543984	SAMHI	MORGAN STANLEY INVESTMENT MGT INC. A/C MORGAN STANLEY INDIA INVT FUND INC	B	565404	187.1
543984	SAMHI	QUEST INVESTMENT ADVISORS PRIVATE LIMITED	B	534600	187.1
543984	SAMHI	SUBHKAM VENTURES I PRIVATE LIMITED	B	1000000	187.1
543984	SAMHI	TATA TRUSTEE COMPANY LIMI TED TRUSTEE FOR TATA MUTUAL FUND	B	801840	187.1

531893	SAWABUSI	TOPGAIN FINANCE PRIVATE LIMITED	B	4000000	0.82
526081	SCAGRO	CHANDAK SANJAY	S	108713	21.75
526081	SCAGRO	PRABHU DAYAL	B	47678	21.75
540147	SHASHIJIT	AJIT DEEPCHAND JAIN	S	1000000	7
540147	SHASHIJIT	SHASHI AJIT JAIN	S	1000000	7
544080	SHILINDORE	CENTURY 21 OFFICESPACE PRIVATE LIMITED	B	457676	1275
544080	SHILINDORE	SABA RAOOF DHANANI	S	88748	1275
544080	SHILINDORE	SUCHITRA DHANANI	S	271438	1275
544080	SHILINDORE	SUMERA RAOOF DHANANI	S	88748	1275
544202	STANLEY	IRAGE BROKING SERVICES LLP	S	98533	497.18
544202	STANLEY	IRAGE BROKING SERVICES LLP	B	322781	494.51
544202	STANLEY	MORGAN STANLEY ASIA SINGAPORE PTE	B	350000	478.87
544202	STANLEY	NIPPON INDIA MUTUAL FUND A/C NIPPON LIFE INDIA TRUSTEE LTD-EQUITY HYBRID FUND	B	250000	478.71
544202	STANLEY	NIPPON INDIA MUTUAL FUND A/C NIPPON LIFE INDIA TRUSTEE LTD-SMALL CAP FUND	B	1718250	478.71
544202	STANLEY	NIPPON INDIA MUTUAL FUND A/C NIPPON LIFE INDIA TRUSTEE LTD-VALUE FUND	B	1256750	478.71
544202	STANLEY	OMAN INDIA JOINT INVESTMENT FUND II	S	765698	479.51
544202	STANLEY	OMAN INDIA JOINT INVESTMENT FUND II	S	3316680	478.78
526675	TIRTPLS	ASHIABANU ANVARLI SAIYAD	B	30000	36.31
526675	TIRTPLS	VARIS MAHENDRABHAI DOSHI	S	56824	36.31
540726	TTFL	HARDIK JIGISHKUMAR DESAI	S	132764	47.26
539040	TTIL	INTEX COMMOALES LLP	S	369409	24.87
539040	TTIL	YUVRAJ HIRALAL MALHOTRA	B	390000	24.87
500426	UTLINDS	PRITHVI FINMART PRIVATE LIMITED	B	189359	3.57
538732	VGCL	ANKIT SHARAD SOMANI	B	200000	82.05
538732	VGCL	SIDDHARTHA BHAIYA	S	215000	82.23
531025	VISAGAR	CAMELLIA TRADEX PRIVATE LIMITED	S	5959862	0.91
531025	VISAGAR	CAMELLIA TRADEX PRIVATE LIMITED	B	7157827	0.84
531025	VISAGAR	JIGAR SURENDRA NANDU	B	5000000	0.91
531025	VISAGAR	TOPGAIN FINANCE PRIVATE LIMITED	S	3000000	0.82
531025	VISAGAR	TOPGAIN FINANCE PRIVATE LIMITED	B	3000000	0.82
538970	WARDINMOBI	WARDWIZARD SOLUTIONS INDIA PRIVATE LIMITED	S	2500000	54.6
514378	YARNSYN	ASHWINI NIRAJ SINGH	B	25000	43.9

**NSE**

Security Code	Security Name	Client Name	Deal	Quantity	Price
COUNCODOS	Country Condo's Limited	JIGNESH BHUPENDRA RUPARELIYA	SELL	525000	5.53
DAVANGERE	Dav angere Sugar Company	GANESH S S	SELL	11659485	8.4
GPECO	GP Eco Solutions India L	MANSI SHARE AND STOCK ADVISORS PVT LTD	BUY	121200	368.9
GPECO	GP Eco Solutions India L	MULTIPLIER SHARE & STOCK ADVISORS PRIVATE LIMITED	SELL	163200	368.35
HCLTECH	HCL Technologies Ltd.	BLACKSTONE AQUA MASTER SUB FUND	BUY	144848	1440.5
HCLTECH	HCL Technologies Ltd.	CITIGROUP GLOBAL MARKETS MAURITIUS PVT LTD	BUY	886469	1440.5
HCLTECH	HCL Technologies Ltd.	COPTHALL MAURITIUS INVESTMENT LIMITED	BUY	741621	1440.5
HCLTECH	HCL Technologies Ltd.	FIAM INTERNATIONAL CAPITAL APPRECIATION COMMINGLED POOL	SELL	94651	1440.5
HCLTECH	HCL Technologies Ltd.	FIDELITY ADVISOR SERIES VIII-FIDELITY ADVISOR INTERNATIONAL CAPITAL APPRECIATION FUND	SELL	5951855	1440.5
HCLTECH	HCL Technologies Ltd.	FIDELITY INSTITUTIONAL AM INTERNATIONAL CORE CIT	SELL	440260	1440.5
HCLTECH	HCL Technologies Ltd.	FIDELITY INVESTMENT TRUST FIDELITY INTERNATIONAL CAPITAL APPRECIATION FUND	SELL	3986351	1440.5
HCLTECH	HCL Technologies Ltd.	FIDELITY INVESTMENT TRUST FIDELITY INTERNATIONAL CAPITAL APPRECIATION K6 FUND	SELL	1243624	1440.5
HCLTECH	HCL Technologies Ltd.	FIDELITY SUSTAINABLE WORLD ETF	SELL	14228	1440.5
HCLTECH	HCL Technologies Ltd.	GHISALLO MASTER FUND LP	BUY	741621	1440.5
HCLTECH	HCL Technologies Ltd.	GOLDMAN SACHS (SINGAPORE) PTE	BUY	289696	1440.5

HCLTECH	HCL Technologies Ltd.	ICICI PRUDENTIAL MUTUAL FUND	BUY	6952695	1440.5
HCLTECH	HCL Technologies Ltd.	KOTAK MAHINDRA MUTUAL FUND	BUY	515633	1440.5
HCLTECH	HCL Technologies Ltd.	MORGAN STANLEY ASIA SINGAPORE PTE	BUY	1031316	1440.5
HCLTECH	HCL Technologies Ltd.	NATIONAL PENSION SERVICE MANAGED BY BLACKROCK INSTIONAL TR CO N A	BUY	236000	1440.5
HCLTECH	HCL Technologies Ltd.	PGGM WORLD EQUITY II BV	BUY	69000	1440.5
HCLTECH	HCL Technologies Ltd.	SBI MUTUAL FUND	BUY	515633	1440.5
HCLTECH	HCL Technologies Ltd.	SOCIETE GENERALE	BUY	144848	1440.5
HCLTECH	HCL Technologies Ltd.	SUNAMERICA SERIES TRUST SA FIDELITY INSTITUTIONAL AM INTL GROWTH PORTFOLIO	SELL	196545	1440.5
HCLTECH	HCL Technologies Ltd.	VERITION MULTI-STRATEGY MASTER FUND LTD.	BUY	144848	1440.5
HCLTECH	HCL Technologies Ltd.	VIP INTL CAP APP PORT	SELL	486714	1440.5
HFCL	HFCL Limited	NEXTWAVE COMMUNICATIONS PRIVATE LIMITED	SELL	20000000	107.6
KANANIIND	Kanani Industries Ltd	HARSHIL PREMJBHAI KANANI	SELL	4455708	2.75
KSHITI-RE	Kshitij Poly line Limited	DAMODHAR REDDY CHOPPAKATTALA	BUY	315282	1.1
KSHITI-RE	Kshitij Poly line Limited	PANKAJ .	BUY	267018	0.96
KSHITI-RE	Kshitij Poly line Limited	PRADEEP KUMAR GUPTA	BUY	213000	1.12
KSHITI-RE	Kshitij Poly line Limited	SHITAL MAHESH SURYAVANSHI	SELL	300000	0.98
MEDIORG	Medicamen Organics Ltd	ANKUSH KEDIA	BUY	152000	130.95
MEDIORG	Medicamen Organics Ltd	MANSI SHARE AND STOCK ADVISORS PVT LTD	BUY	100000	136.19
MEDIORG	Medicamen Organics Ltd	MULTIPLIER SHARE & STOCK ADVISORS PRIVATE LIMITED	BUY	80000	134.41
MEDIORG	Medicamen Organics Ltd	SELVAMURTHY AKILANDESWARI	BUY	200000	135.09
MEDIORG	Medicamen Organics Ltd	SETU SECURITIES PVT LTD	BUY	76000	133.17
NDL	Nandan Denim Limited	NAKSHATRA STRESSED ASSETS FUND SCHEME I	BUY	1818000	47.9
NDL	Nandan Denim Limited	VEDPRAKASH DEVKINANDAN CHIRIPAL	SELL	5012124	47.96
NAVKARCORP	Nav kar Corporation Ltd.	RAJASTHAN GLOBAL SECURITIES PVT LTD	BUY	1000000	113.75
NEOGEN	Neogen Chemicals Limited	CUSTODY BANK OF JAPAN LTD RE RB AMUNDI INDIA SMALL CAP EQUITY MOTHER FUND	BUY	770000	1610
NEOGEN	Neogen Chemicals Limited	HARIDAS THAKARSHI KANANI	SELL	1495000	1611.14
NEOGEN	Neogen Chemicals Limited	INDIA ACORN ICAV	BUY	251900	1610
OMAXE	Omaxe Limited	EBISU GLOBAL OPPORTUNITIES FUND LIMITED	BUY	2606465	109.55
OMAXE	Omaxe Limited	NOMURA SINGAPORE LIMITED	SELL	2606465	109.5
OLIL	Oneclick Logistics Ind L	SHREE SADGURU INVESTMENTS	BUY	22800	70.96
SHK	S H Kelkar and Co. Ltd.	KEDAR RAMESH VAZE	SELL	875873	185.77
SLONE	Slone Infosystems Limited	ASHWIN STOCKS AND INVESTMENT PRIVATE LIMITED	SELL	28800	160.81
SOLARA	Solara Active Pha Sci Ltd	AUTHUM INVESTMENT AND INFRASTRUCTURE LIMITED	BUY	2000000	495
SOLARA	Solara Active Pha Sci Ltd	AUTHUM INVESTMENT AND INFRASTRUCTURE LIMITED	BUY	2000000	495
SOLARA	Solara Active Pha Sci Ltd	TPG GROWTH IV SF PTE LTD	SELL	2000000	495
SOLARA	Solara Active Pha Sci Ltd	TPG GROWTH IV SF PTE LTD	SELL	2000000	495
STANLEY	Stanley Lifestyles Ltd	FRANKLIN TEMPLETON MUTUAL FUND	BUY	1100000	475
STANLEY	Stanley Lifestyles Ltd	NIPPON INDIA MUTUAL FUND	BUY	500000	499.43



STANLEY	Stanley Lifestyles Ltd	OMAN INDIA JOINT INVESTMENT FUND II	SELL	1371873	477.65
STANLEY	Stanley Lifestyles Ltd	OMAN INDIA JOINT INVESTMENT FUND II	SELL	2862429	491.16
STANLEY	Stanley Lifestyles Ltd	VOGUE COMMERCIAL CO.LTD	BUY	504540	495.29
STANLEY	Stanley Lifestyles Ltd	VOGUE COMMERCIAL CO.LTD	SELL	504540	495.59
TAPIFRUIT	Tapi Fruit Processing Ltd	JIGNESHBHAI JASMATBHAI LAKHANI	BUY	24000	139.66
TPHQ	Teamo Productions HQ Ltd	VRINDAA ADVANCED MATERIALS LIMITED	SELL	13628134	1.57
UGROCAP	Ugro Capital Limited	SOCIETE GENERALE	BUY	500000	290.71
VIPULLTD	Vipul Limited	MANSI SHARE AND STOCK ADVISORS PVT LTD	BUY	1000000	45
VIPULLTD	Vipul Limited	P.P. INDUSTRIES PRIVATE LIMITED	BUY	657934	44.82
VIPULLTD	Vipul Limited	PUNIT BERIWALA HUF	SELL	5596134	44.97
VIPULLTD	Vipul Limited	SETU SECURITIES PRIVATE LIMITED	BUY	1500000	45
WINNY	Winy Immigra & Edu Ser L	GAURAV PALIWAL	SELL	20000	239.4
WINNY	Winy Immigra & Edu Ser L	GREEN PEAKS ENTERPRISES LLP	SELL	11000	243.27
WINNY	Winy Immigra & Edu Ser L	KRISHNA AWTAR KABRA	BUY	27000	239.4
WINNY	Winy Immigra & Edu Ser L	MULTIPLIER SHARE & STOCK ADVISORS PRIVATE LIMITED	BUY	65000	239.4
WINNY	Winy Immigra & Edu Ser L	TOPGAIN FINANCE PRIVATE LIMITED	SELL	15000	239.4

**Disclosure:**

Research Reports that are published by Nirmal Bang Securities Private Limited (hereinafter referred to as "NBSPL") are for private circulation only. NBSPL is a registered Research Analyst under SEBI (Research Analyst) Regulations, 2014 having Registration no. INH000001766. NBSPL is also a registered Stock Broker with National Stock Exchange of India Limited, BSE Limited, Metropolitan Stock Exchange of India Limited, Multi Commodity Exchange of India Limited and , National Commodity and Derivative Exchange Limited in Capital Market , Equity and Commodities derivatives segments and Currency Derivatives Segment .

NBSPL has other business divisions with independent research teams separated by Chinese walls, and therefore may, at times, have different or contrary views on stocks and markets.

NBSPL or its associates have not been debarred / suspended by SEBI or any other regulatory authority for accessing / dealing in securities Market since last 20 years. NBSPL, its associates or analyst or his relatives do not hold any financial interest (Except Investment) in the subject company. NBSPL or its associates or Analyst do not have any conflict or material conflict of interest at the time of publication of the research report with the subject company. NBSPL or its associates or Analyst or his relatives may or may not hold beneficial ownership of 1% or more in the subject company at the end of the month immediately preceding the date of publication of this research report.

NBSPL or its associates / analyst has not received any compensation / managed or co-managed public offering of securities of the company covered by Analyst during the past twelve months. NBSPL or its associates have not received any compensation or other benefits from the company covered by Analyst or third party in connection with the research report. Analyst has not served as an officer, director or employee of Subject Company. NBSPL / analyst has not been engaged in market making activity of the subject company.

**Analyst Certification:** The research analysts and authors of these reports, hereby certify that the views expressed in this research report accurately reflects my/our personal views about the subject securities, issuers, products, sectors or industries. It is also certified that no part of the compensation of the analyst(s) was, is, or will be directly or indirectly related to the inclusion of specific recommendations or views in this research. The analyst(s) principally responsible for the preparation of this research report and has taken reasonable care to achieve and maintain independence and objectivity in making any recommendations.

**Disclaimer:**

The Research Report is for the personal information of the authorized recipient and does not construe to be any investment, legal or taxation advice. NBSPL is not soliciting any action based upon it. Nothing in the research report shall be construed as a solicitation to buy or sell any security or product, or to engage in or refrain from engaging in any such transaction. In preparing the research report, we did not take into account the investment objectives, financial situation and particular needs of the reader.

The research report has been prepared for the general use of the clients of NBSPL and must not be copied, either in whole or in part, or distributed or redistributed to any other person in any form. If you are not the intended recipient you must not use or disclose the information in the research report in any way. Though disseminated to all the customers simultaneously, not all customers may receive the research report at the same time. NBSPL will not treat recipients as customers by virtue of their receiving the research report. The research report is not directed or intended for distribution to or use by any person or entity resident in a state, country or any jurisdiction, where such distribution, publication, availability or use would be contrary to law, regulation or which would subject NBSPL & its group companies to registration or licensing requirements within such jurisdictions.

The report is based on the information obtained from sources believed to be reliable, but we do not make any representation or warranty that it is accurate, complete or up-to-date and it should not be relied upon as such. We accept no obligation to correct or update the information or opinions in it. NBSPL or any of its affiliates or employees shall not be in any way responsible for any loss or damage that may arise to any person from any inadvertent error in the information contained in the research report. NBSPL or any of its affiliates or employees do not provide, at any time, any express or implied warranty of any kind, regarding any matter pertaining to this report, including without limitation the implied warranties of merchantability, fitness for a particular purpose, and non-infringement. The recipients of the research report should rely on their own investigations.

This information is subject to change without any prior notice. NBSPL reserves its absolute discretion and right to make or refrain from making modifications and alterations to this statement from time to time. Nevertheless, NBSPL is committed to providing independent and transparent recommendations to its clients, and would be happy to provide information in response to specific client queries.

Before making an investment decision on the basis of research report, the reader needs to consider, with or without the assistance of an adviser, whether the advice is appropriate in light of their particular investment needs, objectives and financial circumstances. There are risks involved in securities trading. The price of securities can and does fluctuate, and an individual security may even become valueless. International investors are reminded of the additional risks inherent in international investments, such as currency fluctuations and international stock market or economic conditions, which may adversely affect the value of the investment. Opinions expressed are subject to change without any notice. Neither the company nor the director or the employees of NBSPL accept any liability whatsoever for any direct, indirect, consequential or other loss arising from any use of the research report and/or further communication in relation to the research report. Here it may be noted that neither NBSPL, nor its directors, employees, agents or representatives shall be liable for any damages whether direct or indirect, incidental, special or consequential including lost revenue or lost profit that may arise from or in connection with the use of the information contained in the research report.

Copyright of this document vests exclusively with NBSPL.

Our reports are also available on our website

Registration granted by SEBI and certification from NISM in no way guarantee performance of NBSPL or provide any assurance of returns to investors.

**Nirmal Bang Research (Division of Nirmal Bang Securities Pvt. Ltd.)**

B-2, 301/302, Marathon Innova,  
Opp. Peninsula Corporate Park  
Off. Ganpatrao Kadam Marg  
Lower Parel(W), Mumbai-400013  
Board No. : 91 22 6723 8000/8001  
Fax. : 022 6723 8010